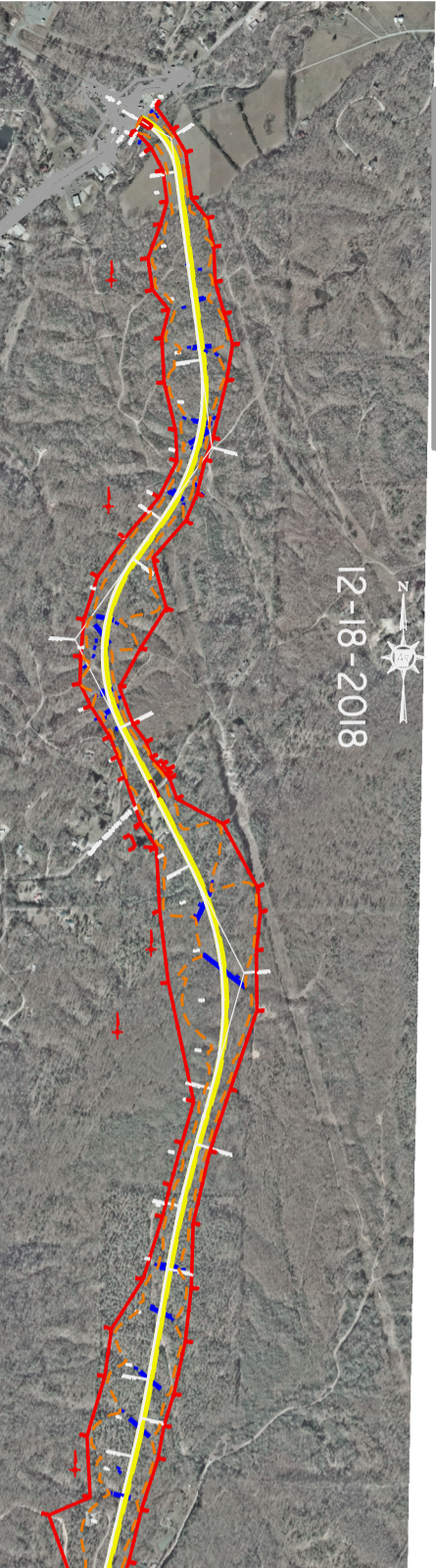
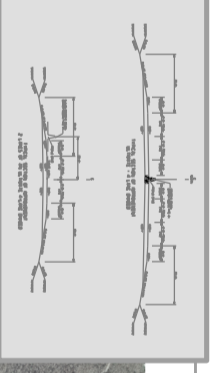
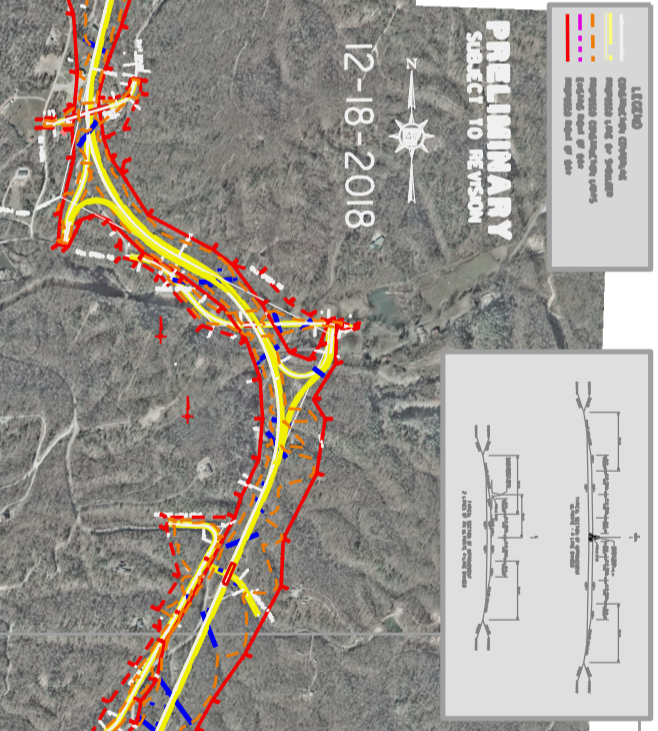


PRELIMINARY
SUBJECT TO REVISION

PRELIMINARY DESIGN
R60140 - HWY. 70 EAST - HWY. 7 NORTH (S)
NEW LOCATION ROUTE
GARLAND COUNTY



PRELIMINARY
SUBJECT TO REVISION



PRELIMINARY
SUBJECT TO REVISION

